

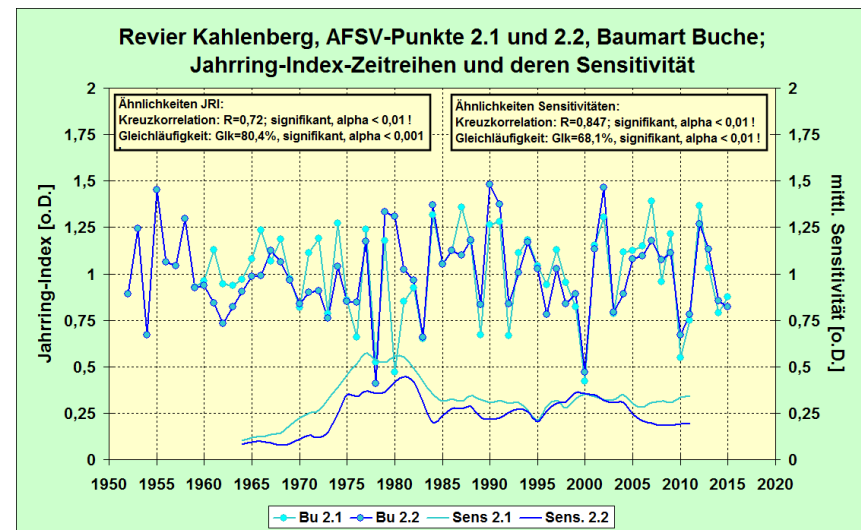
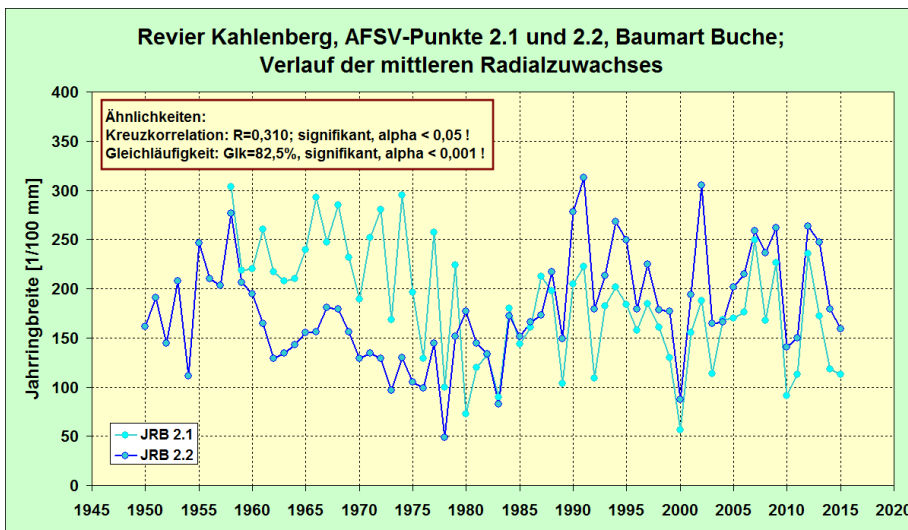
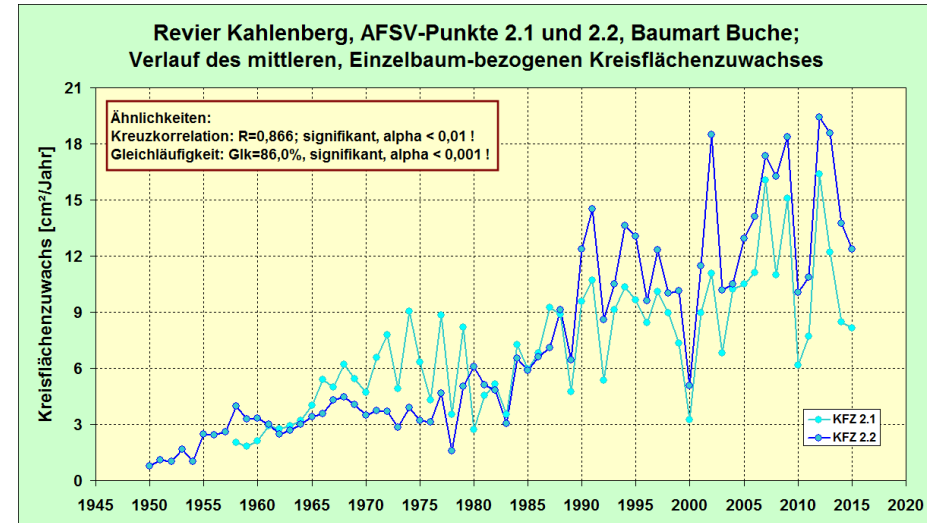
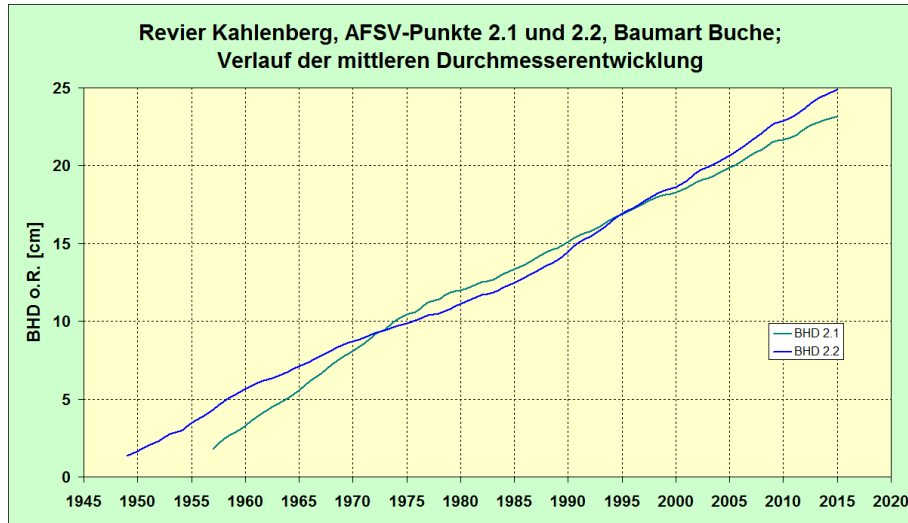
Ergänzung zum Exkursionsführer

AFSV-Exkursion 2016

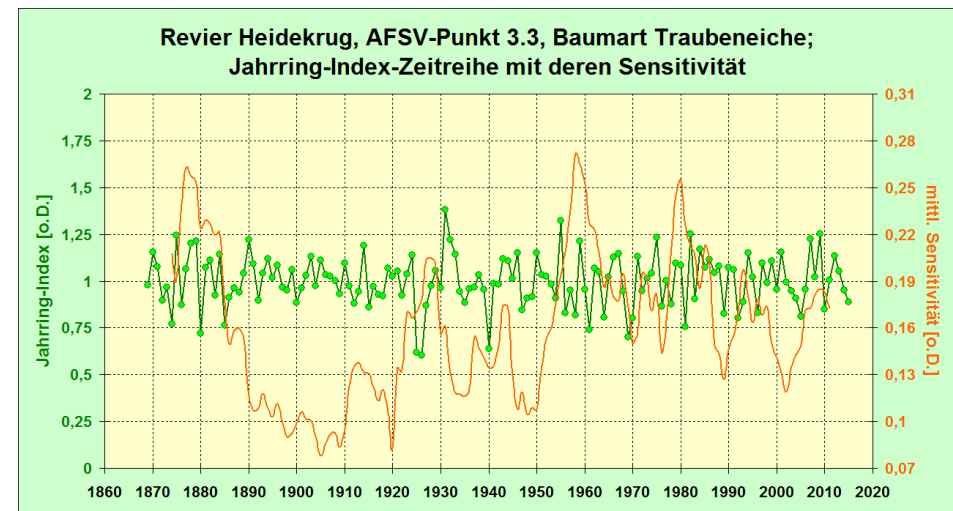
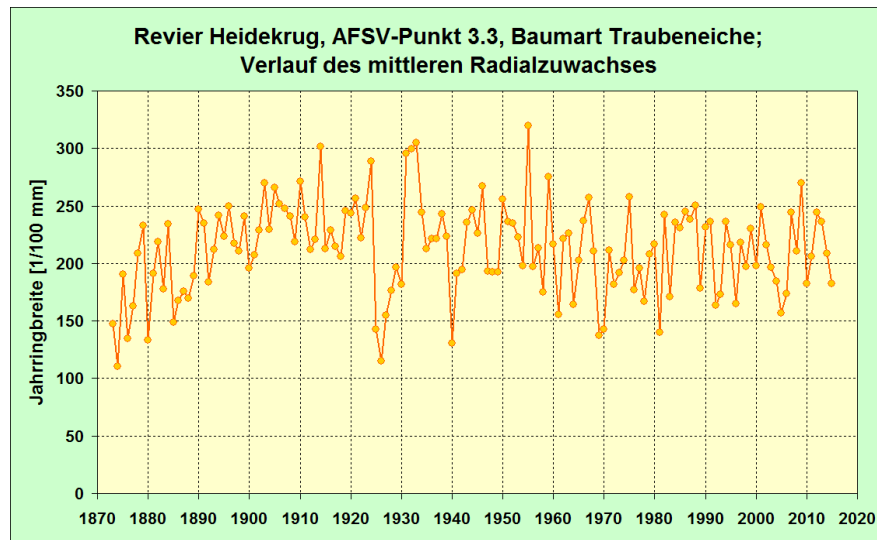
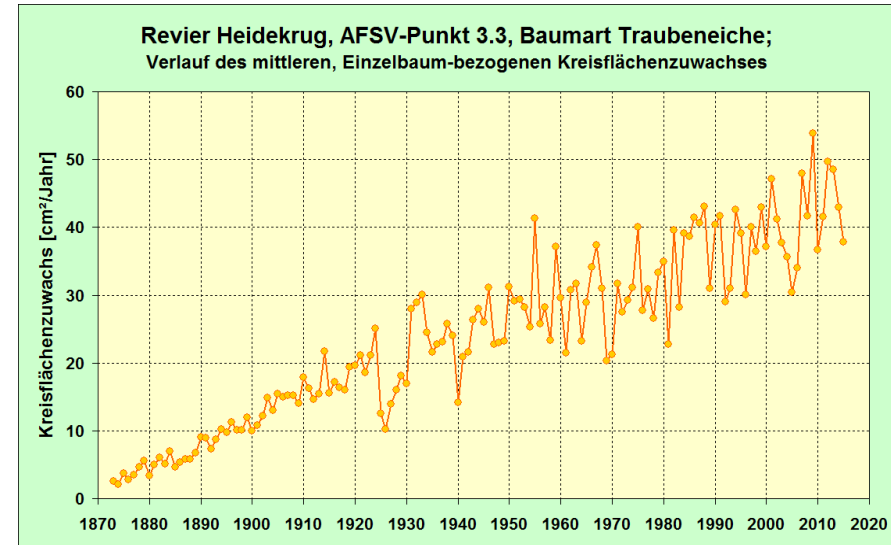
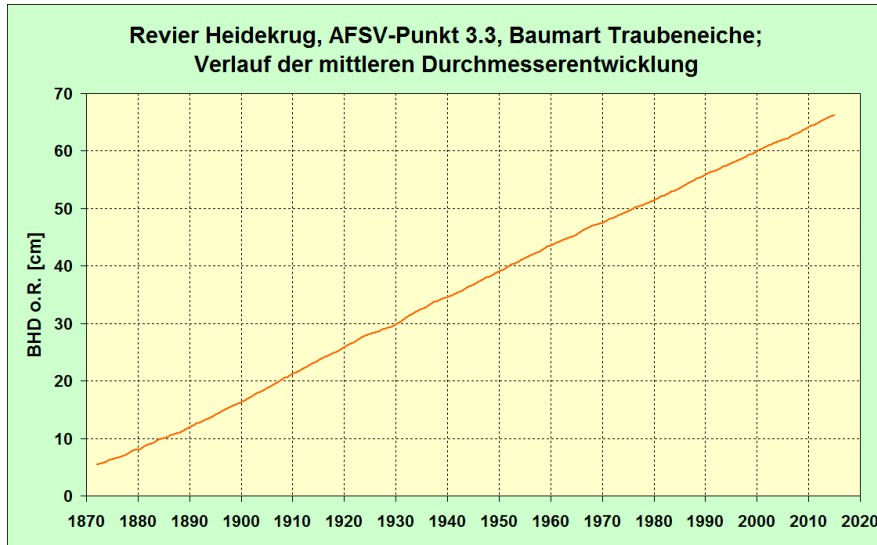
**Dendroökologische Untersuchungsergebnisse zu
ausgewählten Exkursionspunkten**

**Wolfgang Beck
Thünen-Institut für Waldökosysteme
Eberswalde**

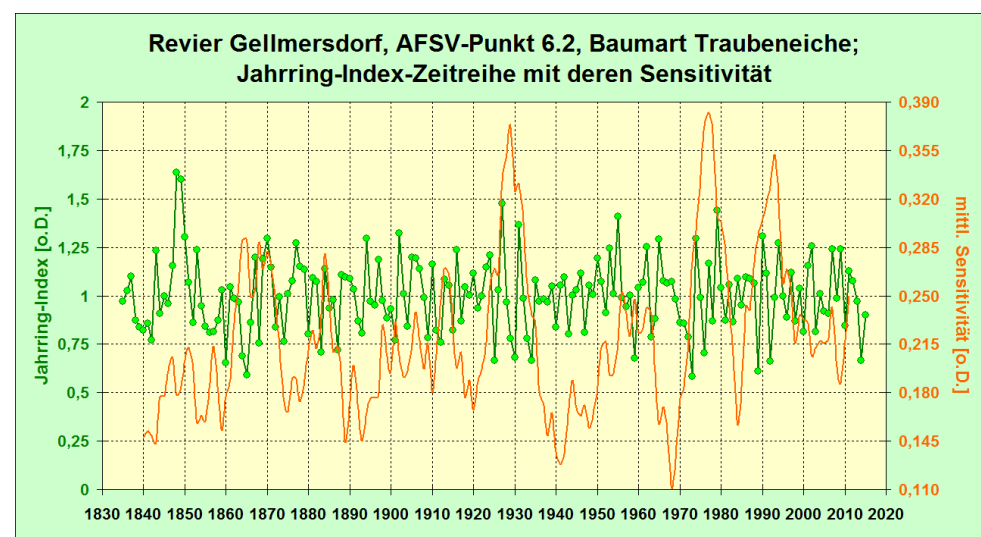
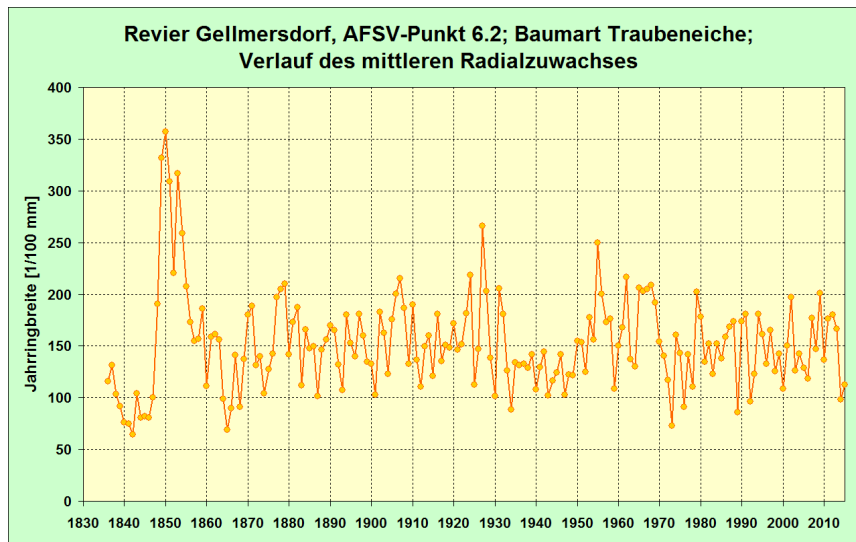
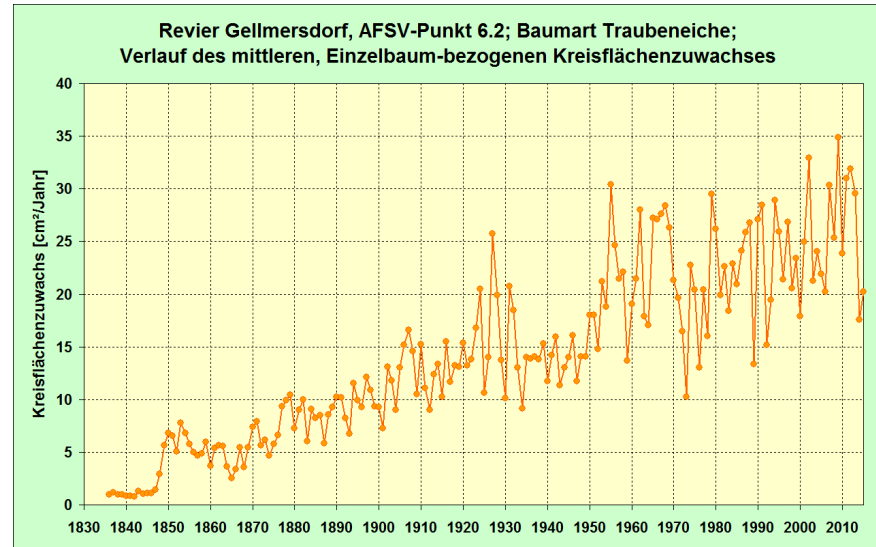
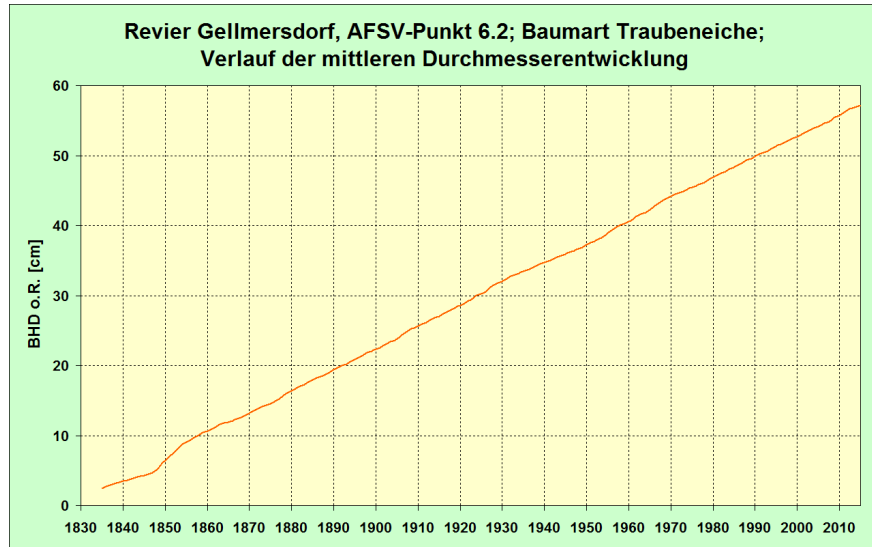
Exkursionspunkte 2.1 und 2.2, Revier Kahlenberg, Baumart Buche



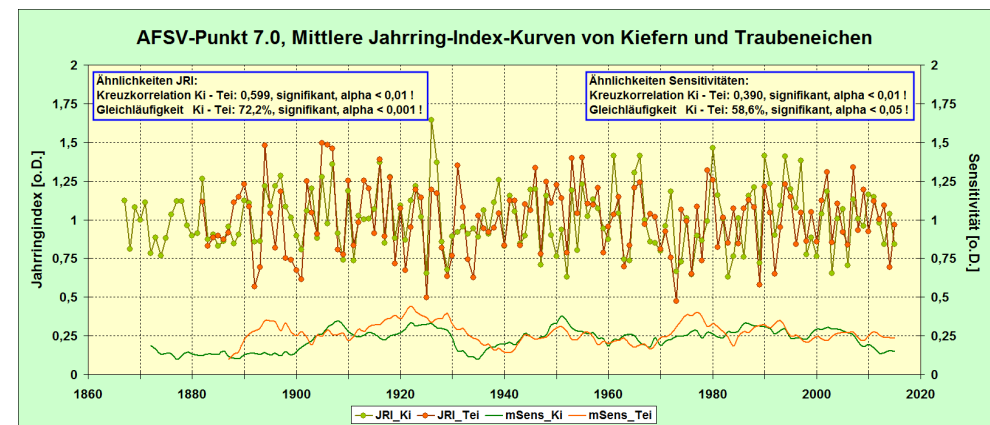
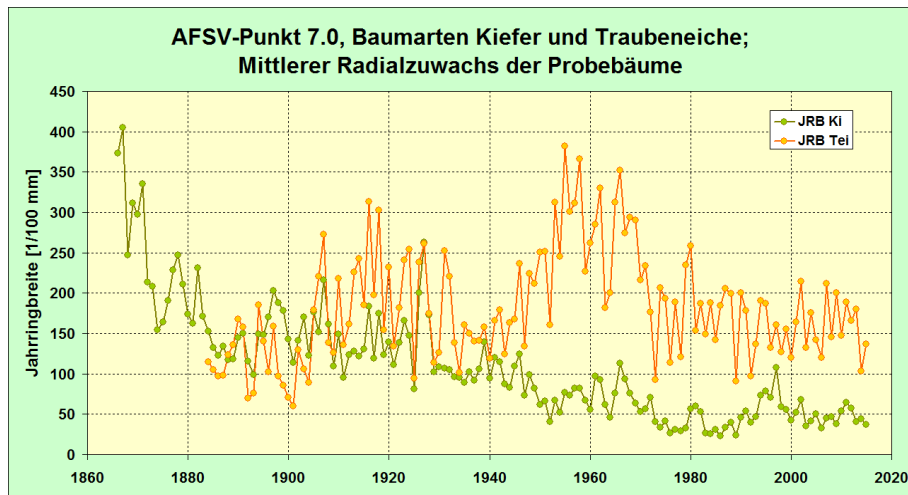
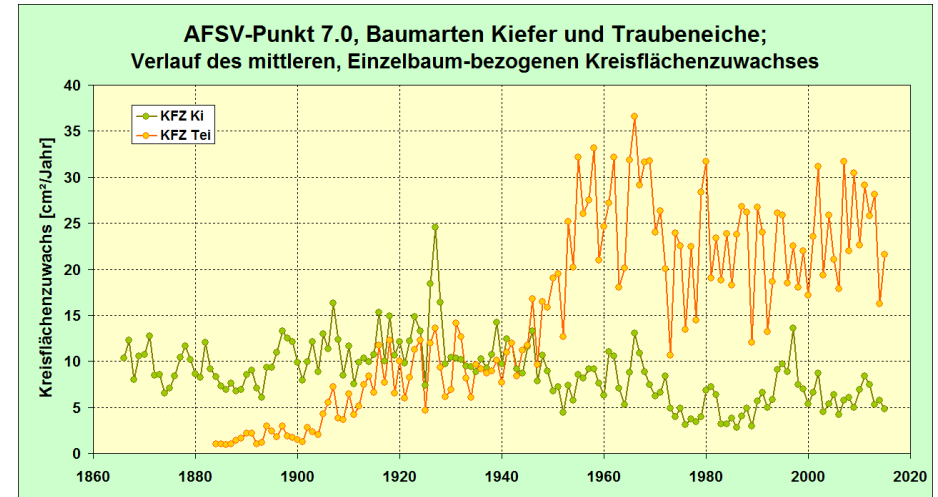
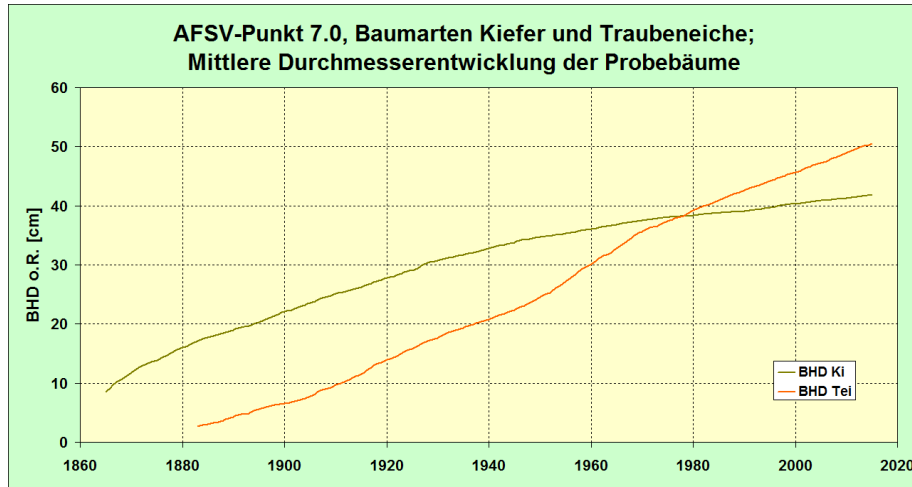
Exkursionspunkt 3.3, Revier Heidekrug, Baumart Traubeneiche



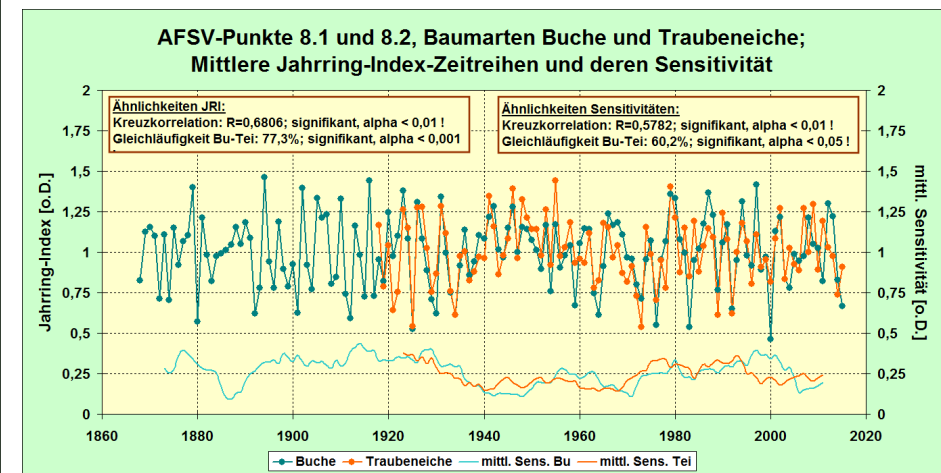
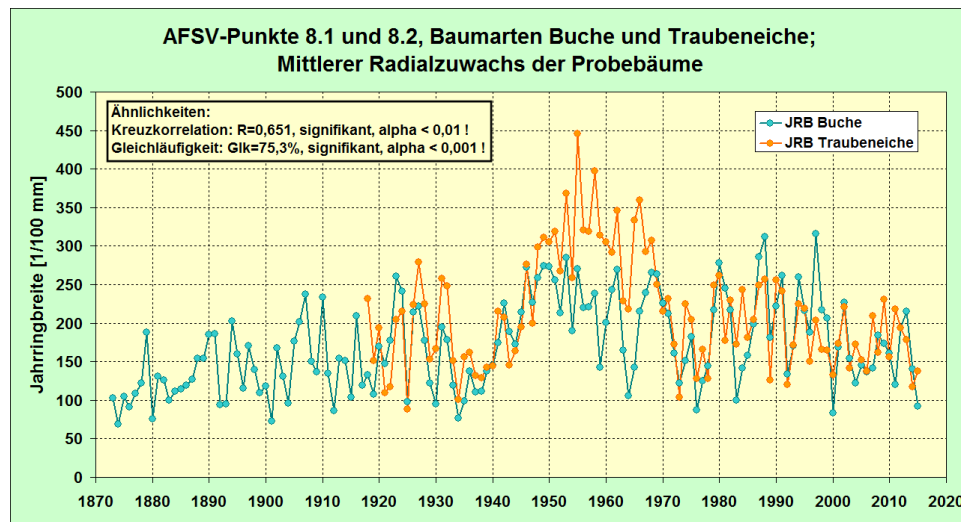
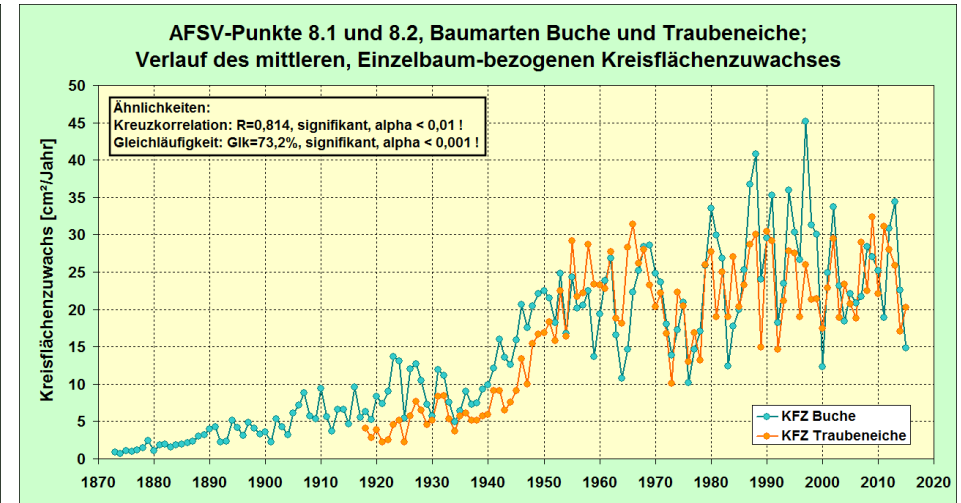
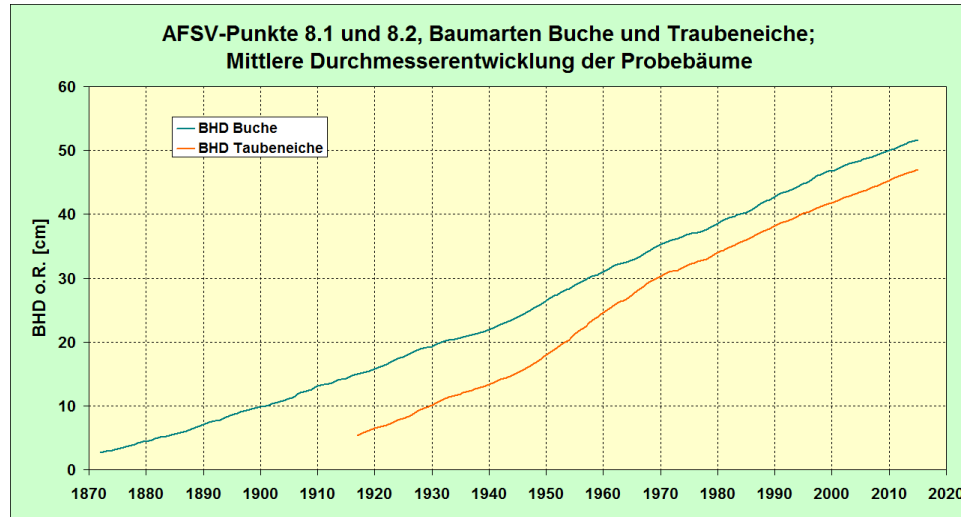
Exkursionspunkt 6.2, Revier Gellmersdorf, Baumart Traubeneiche



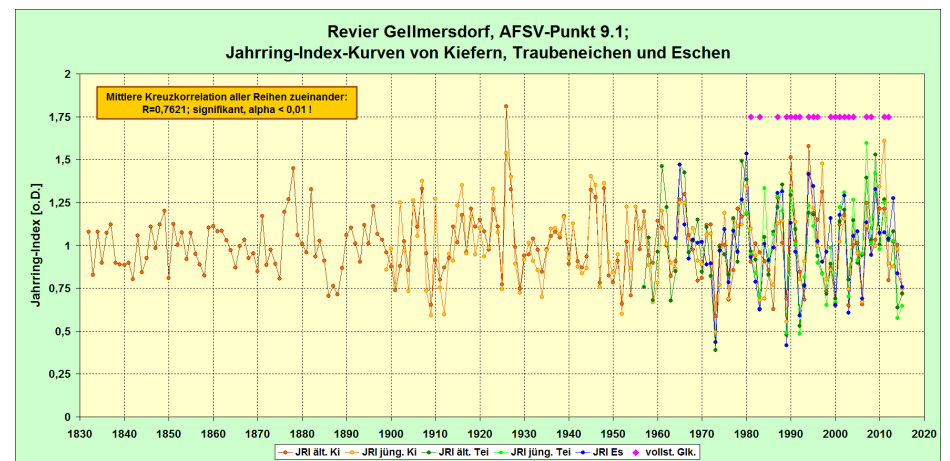
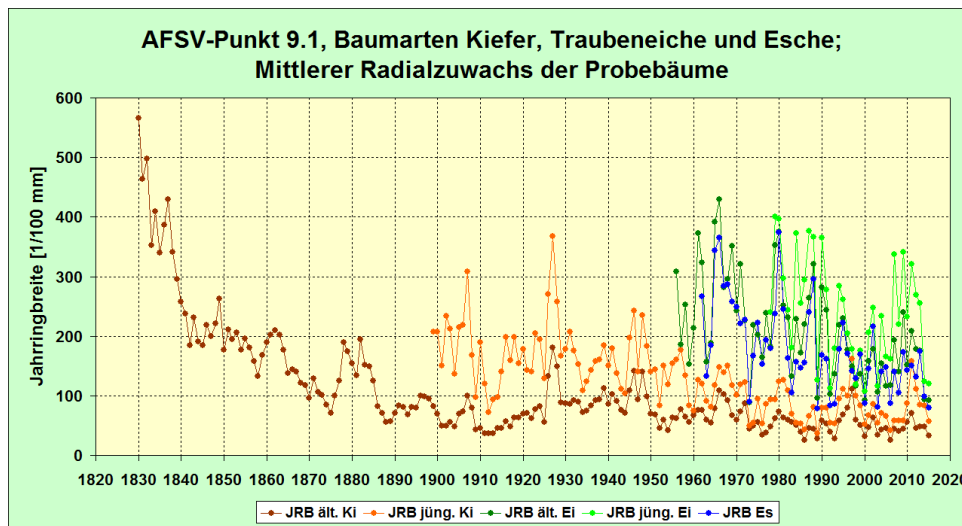
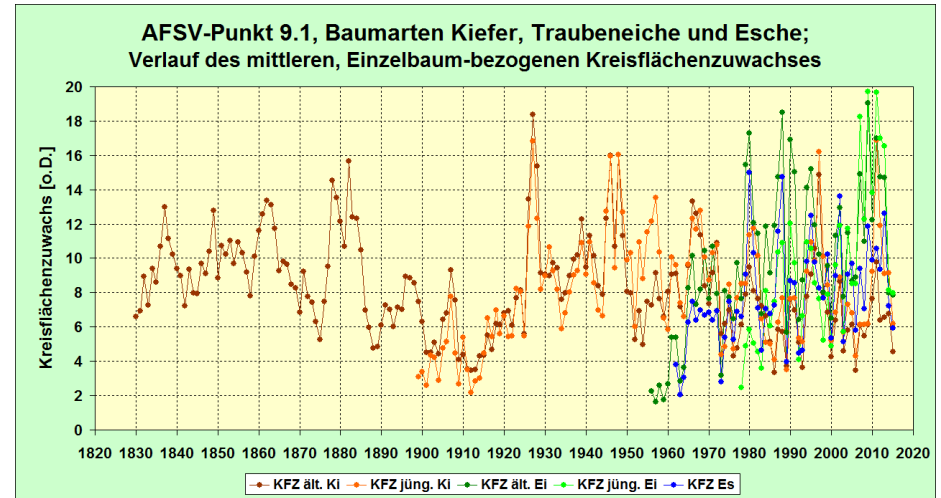
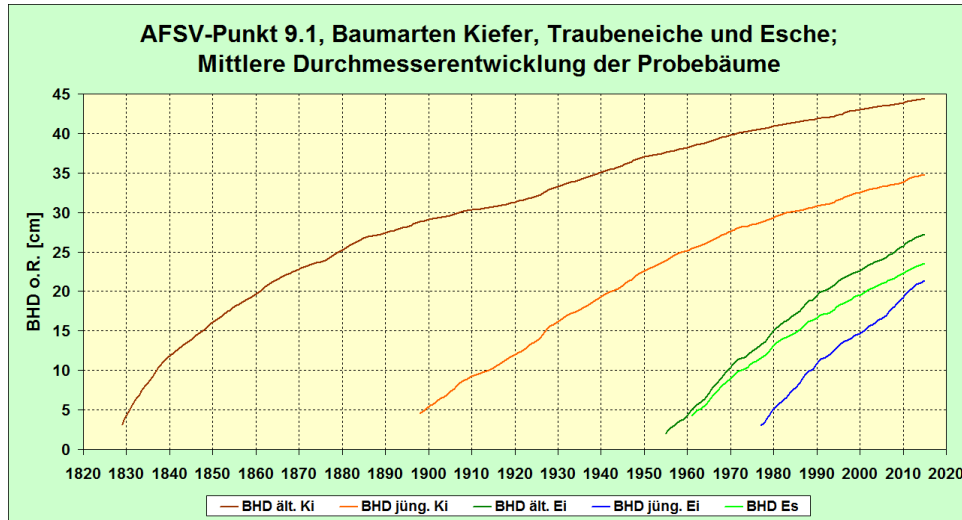
Exkursionspunkte 7.0, Revier Gellmersdorf, Baumarten Kiefer und Traubeneiche



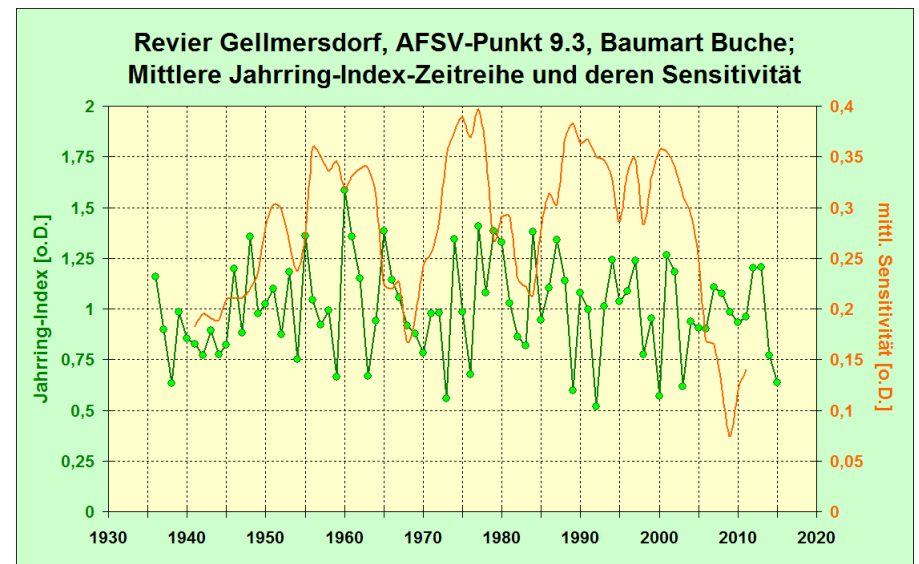
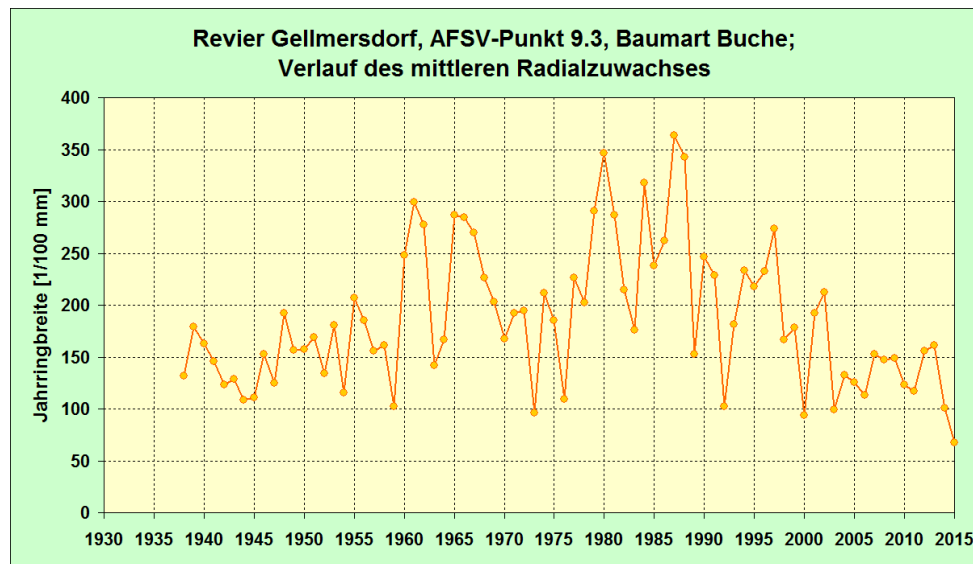
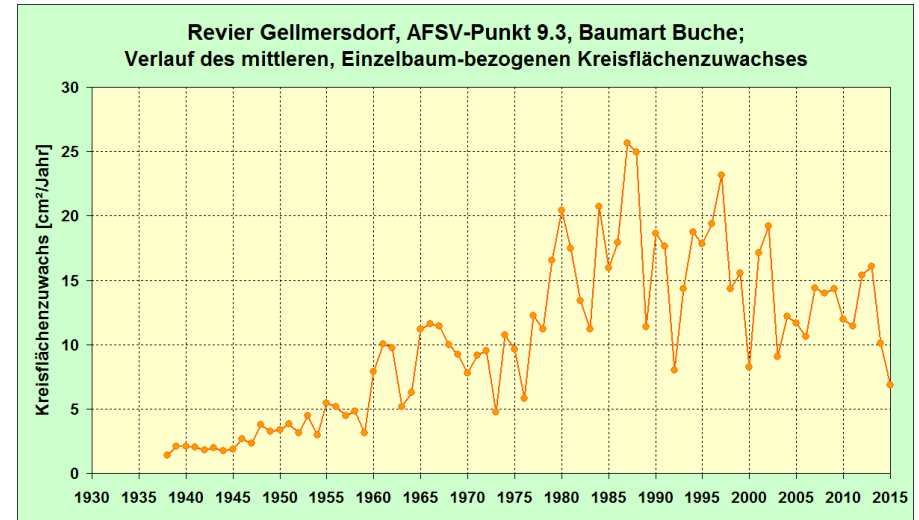
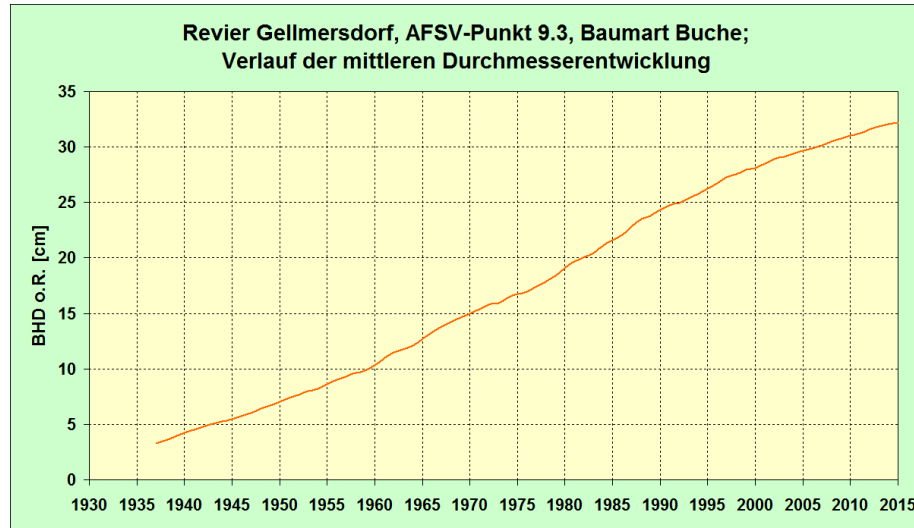
Exkursionspunkte 8.1 und 8.2, Revier Gellmersdorf, Baumarten Traubeneiche und Buche



Exkursionspunkte 9.1, Revier Gellmersdorf, Baumarten Kiefer, Traubeneiche und Esche



Exkursionspunkte 9.3, Revier Gellmersdorf, Baumart Buche



Zusammenfassungen

